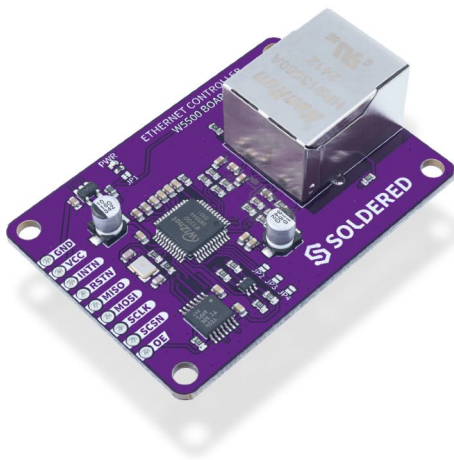


## ETHERNET CONTROLLER W5500 BOARD



**Weight** 16 g

### DESCRIPTION

Designed with practicality in mind, this small yet powerful breakout contains the W5500 Ethernet controller, enabling fast and reliable internet connection for your Dasduino projects. Whether you're an experienced enthusiast or just a beginner, this module is your reliable ally for connecting your Dasduino CORE to the internet.

In addition to the mentioned controller, the board features an RJ-45 connector for Ethernet cable connection, and the connection to Dasduino is via the SPI protocol.

So, whether you want to build a smart home automation system, create an IoT device with web connectivity, or simply explore the world of networked electronics with your Dasduino, the W5500 breakout is here. Say goodbye to connection problems and welcome the world of endless possibilities - all with the help of this little marvel!

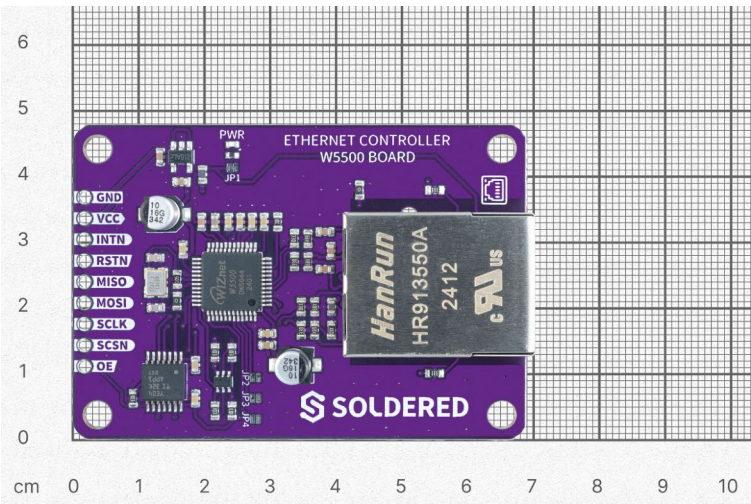
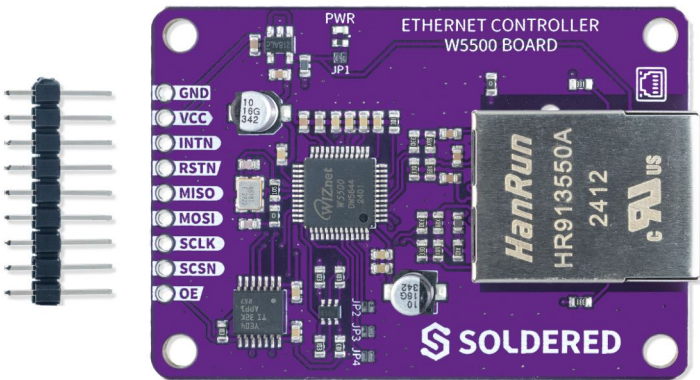
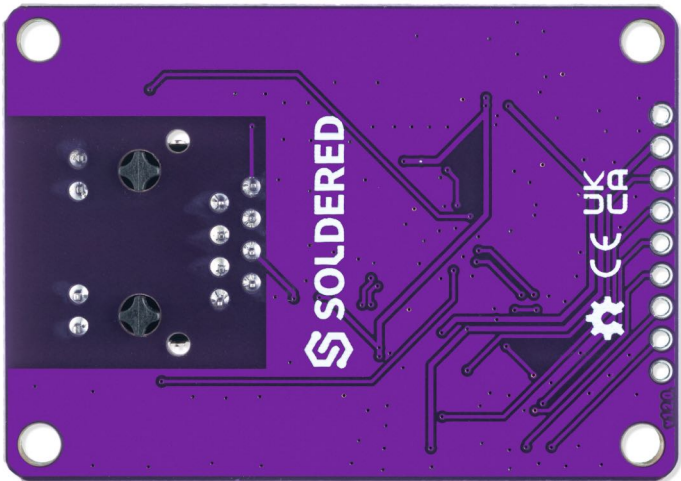
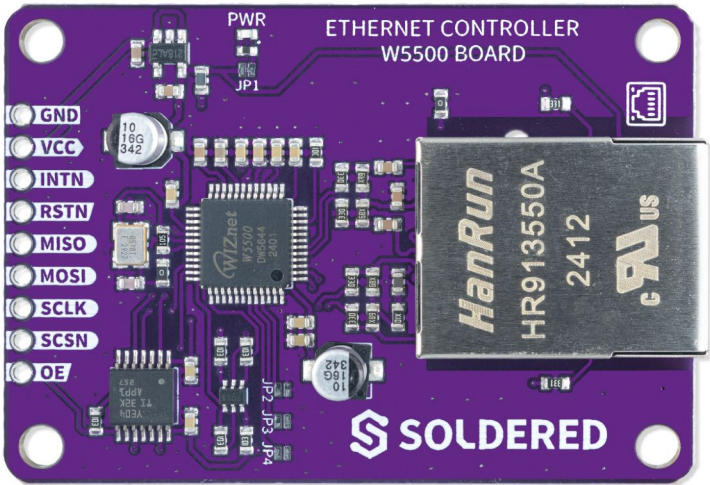
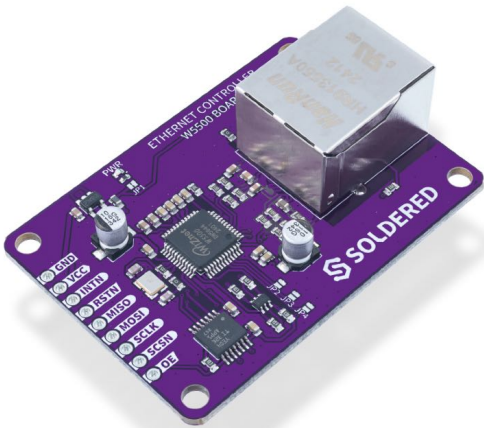
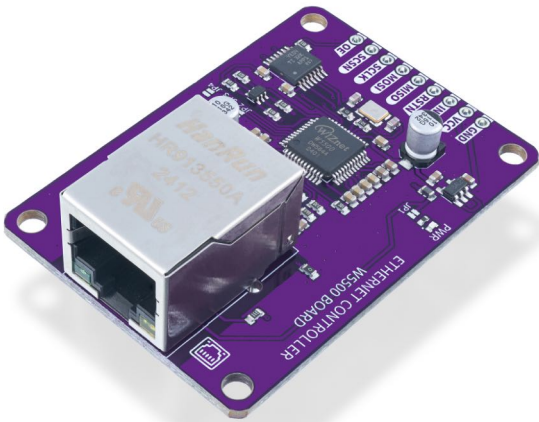
### FEATURES

- IC: W5500
- Protocols: TCP, UDP, IPv4, ICMP, ARP, IGMP, PPPoE
- Communication: SPI
- Dimensions: 54 x 38 mm / 2.1 x 1.5 inch

### USEFUL LINKS

- [Datasheet](#)

OTHER IMAGES



Weight 16 g

